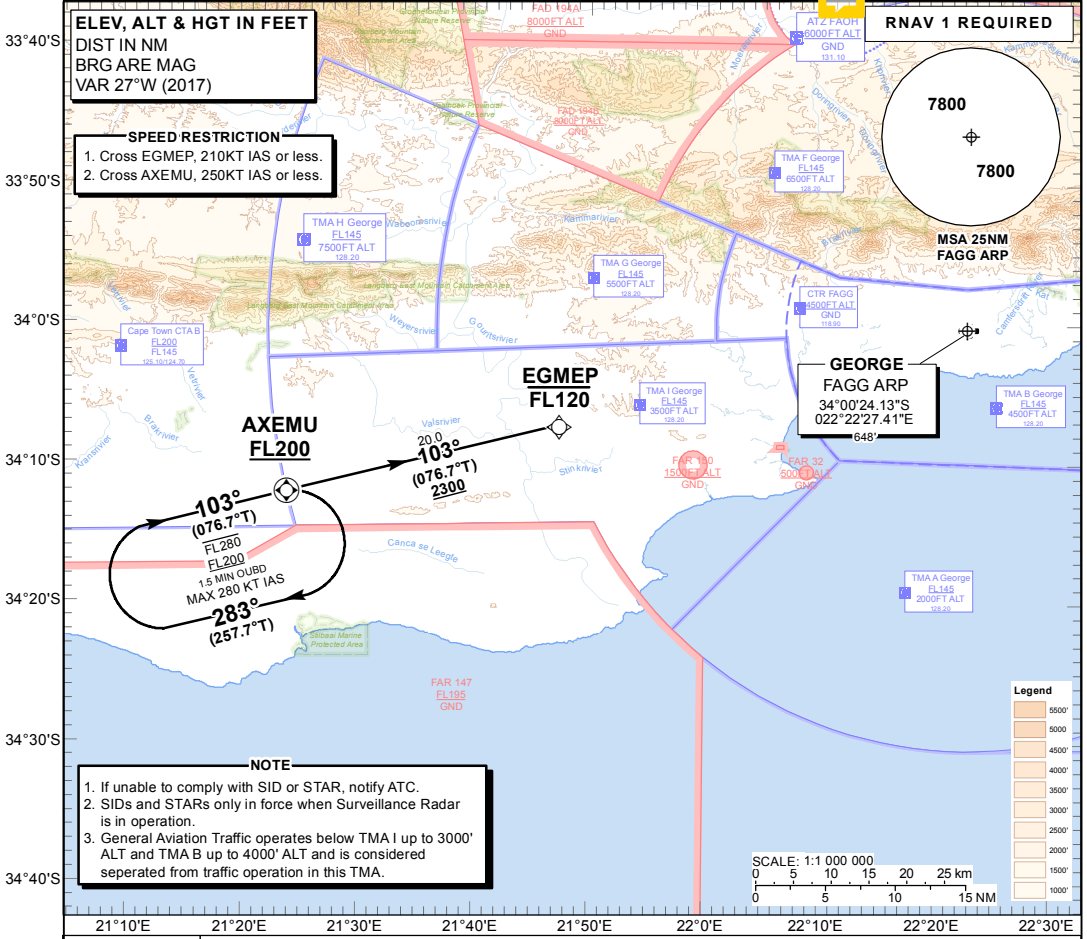


STANDARD ARRIVAL CHART - ICAO INSTRUMENT (STAR)

TRANSITIONAL ALTITUDE
8000'
TRANSITIONAL LEVEL
ATC

APP: 128.20
TWR: 118.90
APN: 122.65
ATIS: 126.225

GEORGE
RNAV (GNSS) RWY 11
AXEMU 1A



NOTE

1. If unable to comply with SID or STAR, notify ATC.
2. SIDs and STARs only in force when Surveillance Radar is in operation.
3. General Aviation Traffic operates below TMA I up to 3000' ALT and TMA B up to 4000' ALT and is considered seperated from traffic operation in this TMA.

**AXEMU 1A:
RWY 11**

Leave AXEMU and proceed to EGMEP at FL120 or below. At EGMEP continue on the RNAV (GNSS) APCH RWY 11 or establish on the ILS LOC RWY 11. Request RADAR vectors if required.

COMMUNICATION FAILURE PROCEDURE (Squawk 7600)

Before AXEMU: Proceed to AXEMU and enter the AXEMU RNAV (GNSS) hold at FL200. Hold for a minimum 5 MIN. Leave AXEMU on the "After AXEMU" Communication Failure Procedure.

After AXEMU: Continue on the AXEMU 1A RNAV (GNSS) STAR. At EGMEP continue on the the RNAV (GNSS) APCH RWY 11 or establish on the ILS LOC RWY 11 and land.

CHANGE: NEW Procedure